



SOUTHLAKE Community

News & Views



✧ 2013 Calendar ✧

Meeting Schedule

Montclair Library Meeting

Jan 16 Wed 7:30 pm

PWC will present plans for the Montclair Library site

Southlake Recreation

Feb 7 Thurs 7:30 pm

Mar 7 Thurs 7:30 pm

April 4 Thurs 7:30 pm

Southlake Cove THA

Jan 14 Mon 7:30 pm

Mar 11 Mon 7:30 pm

Southlake Landing THA

Jan 15 Tues 7:00 pm

Feb 12 Tues 7:00 pm

Mar 12 Tues 7:00 pm

April 9 Tues 7:00 pm

For other calendar events visit www.southlakerecreation.com

✧ Holiday Trivia ✧

1) Where does the tradition of kissing under mistletoe come from?

2) Where and when did the custom of having and decorating Christmas trees originate?

3) In the story *A Christmas Carol* who is the first ghost to appear to Scrooge?

Helping to Beautify Southlake



Boy Scout Dylan McDonald takes a much-deserved rest on a newly-installed Bench.

Eagle Scout Project - Boy Scout Troop 189

Thanks to Boy Scout Troop 189, Southlake Cove Townhomes Association has a newly renovated bluestone lakeside trail for residents to enjoy.

Montclair Boy Scout **Dylan McDonald** of Troop 189 completed his Eagle Scout Project November 4th with the help of over 20 Scouts and family members. Over 205 man hours went into the renovation of Southlake Cove Townhomes Association's lake-front bluestone trail.

No small accomplishment, as Dylan had to submit plans for approval by Prince William County Environmental Services Division, Montclair Property Owners and Southlake Cove Townhomes Associations. Eagle Scout Projects require the Scout to submit a complete plan, project materials and oversee the installation. Many thanks from the Southlake Board of Directors and community to the Bugge', Dotson, Haskovec, Henshaw, Iber, Johnson, McDonald, Murasaki, Rehard, Tainter, Treat, Vitter, Wilson and Winklepleck families. Vulcan Materials generously donated the bluestone.



Happy Holidays
from your Boards of Directors

Southlake 2013

Board of Directors Cove • Landing • Recreation

Southlake Landing THA

P. O. Box 381
Dumfries, VA 22026

Barbara (Bunny) Smith	President
	703-583-9696
Maggie Gustavson	Treasurer
	703-795-0041
Marie Juliano	Secretary
	703-583-9719
Sue Zamperini	Mbr-at-Lg
	703-878-3820
Patricia Kelleher	Mbr-at-Lg
	617-680-3630

Southlake Cove THA

P. O. Box 333
Dumfries, VA 22026

Guillermo Garcia, Jr.	President
	703-580-4421
Timothy Jack	Vice President
	703-897-8367
Lynne Dewitt	Secretary
	703-730-9710
Sheila Dorsey	Treasurer
	703-730-7244
Patrick Brookes	Mbr-at-Lg
	571-285-3759

Southlake Recreation Assoc.

P. O. Box 263
Dumfries, VA 22026

Daniel Schwemmer	Chairman
	703-580-1345
Anthony Brannan	President
	703-878-2682
Keith Herring	Mbr-at-Lg
	703-590-2971
Garth Miller	Mbr-at-Lg
	703-583-2052
Greg Barlow	Mbr-at-Lg
	703-590-2999

Management Office
@ 703-670-2376

Make A Difference

As we begin another year, here are some thoughts on how we all can make our community an even better place to live in 2013 and beyond.

Responsibility. Take responsibility for adhering to rules and meeting your financial obligations to the community, so we can avoid the costly and unpleasant task of pursuing legal actions.

Sharing. Share ideas, perspectives and concerns so we can all work together to build an even better community.

Fellowship. Actively participate in the recreational, social and cultural activities of the community.

Involvement. Attend association meetings and take the time to review important information about our community.

Inclusiveness. Actively welcome new residents, making all owners and renters feel part of the community.

Pride. Be proud to live in this community and recommend it to others who are looking for a good place to call home.

As members of this community, we should all strive to do our part.

Great Reasons to Volunteer for Your Association

- Protect your self-interests.** Protect your property values and maintain the quality of life in your community.
- Correct a problem.** Has your car been towed, or do you think maybe maintenance has been neglected?
- Be sociable.** Meet your neighbors, make friends, and exchange opinions.

2013



- Give back.** Repay a little of what's been done for you.
- Advance your career.** Build your personal resume by including your community volunteer service.
- Have some fun.** Association work isn't drudgery. It's fun accomplishing good things with your neighbors.
- Get educated.** Learn how it's done—we'll train you.
- Express yourself.** Help with creative projects like community beautification.
- Earn recognition.** If you would like a little attention or validation, your contributions will be recognized and celebrated.
- Try some altruism.** Improve society by helping others.

Reminders

Assessment Deadlines

Southlake Landing and Cove THAs

Due February 1

Late Fee \$25 Feb 15

Late Fee \$50 Mar 15

April 1 - Delinquent accounts forwarded to Attorney for action.

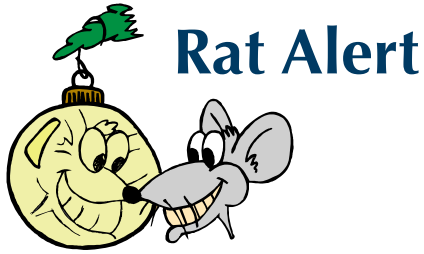
Southlake Recreation Association

Due March 1

Late Fee \$25 Mar 15

Late Fee \$50 Apr 15

May 1 - Delinquent accounts forwarded to Attorney for action.



Rat Alert

PWC Health Dept. has cited individual residents for placing trash outside in plastic bags. **RATS FEED ON TRASH, ANIMAL FECES and BIRD FOOD**, and love to harbor in and around tall grass, firewood and lumber.

PWC Health Dept. requires you to:

- properly contain trash, pet feces and bird food
- use trash containers made of durable watertight, rust-resistant material and with close-fitting lids and handles to facilitate collection
- regularly cut your grass and elevate your firewood and lumber 8-12" off the ground

Noncompliance may result in a misdemeanor charge punishable by a fine of not less than \$25.00 nor more than \$50.00 per day.



Why Scoop the Poop?

Besides being offensive and a nuisance, it's a health hazard to the community – as stated above, **rats feed on pet feces**.

PARENTS, because children are often the person walking the family pet, please share with them the responsibilities of pet ownership including adherence to county ordinances for cleaning up dog waste and leash requirements.

Seasonal Tips

Let It Snow, Let It Snow, Let It Snow!



- * **DO NOT Parallel Park** on the streets prior to and during snow storms. The snow plows will not be able to properly access your streets.
- * Please be considerate of your neighbors and snow plow operators. Plow operators know how best to negotiate their equipment in these conditions. Please give them the benefit of the doubt. The good news is that there are owners out there who “chip in” to help their neighbors.
- * Do not shovel snow from your parking space into a neighbor’s parking space or into a visitor parking space.
- * Wait until after the first snow plow plows the center of your street, if possible, before shoveling out your vehicle space. When the snow plow comes through, snow naturally will be thrown back against parking spaces.
- * Do not block storm drains with snow to prevent flooding of streets, yards and homes when snow melts.
- * Clear accumulated snow from the top of your heat pump. Clear excessive snow away from your home foundation.
- * Apply automotive wax to your shovel, and snow won’t stick.
- * Homeowners should shovel the sidewalks in front of their homes.
- * Shovel around your mailbox stands – so mail can be delivered.
- * Snow plowing does not include clearing parking spaces or sidewalks. Plowing begins after two inches of snow accumulation.

Pet owner warning – it is against the Law to...

- ♥ allow your animal to urinate or defecate on private property
- ♥ allow your animal to run at large
- ♥ allow prolonged or intense barking

For more information and a complete list of rules, contact the Animal Control Bureau at 703-792-6465 or go to www.pwcgov.org. and type in the search box *Animal Control Bureau*.

“ While we are all entitled to enjoy our space, we must maintain respect for our neighbors. This applies to both homeowners and renters – we are a community. ”



Community Focus

■ Un-Deck the Halls

With the Christmas Holiday nearing an end, for those who contract with American Disposal, Christmas trees will be picked up curb-side in January. Please ensure all Holiday boxes, packing materials, etc. are contained appropriately.

◆ **Southlake Residents – trash removal is NOT a service provided by the association.** For curb-side trash removal, you must contract with American Disposal Services at 703-368-0500.

◆ Trash must be placed in front of individual homes for pickup **ONLY ON MONDAYS AND THURSDAYS**. Do not place trash on common area islands. Trash containers are to be removed after trash pick-up and stored in the rear fence areas or in garage.

■ Improvements

The Board of Directors, over the past years, have installed new street lights in the community, new landscaping, performed street/asphalt repairs, pavement-marking, repaving, repair of all sidewalks, curb, gutter and storm drain boxes. Streetlights are high-pressure sodium, photo-cell lights which are “dark sky friendly,” meaning they help cut glare and reduce sky glow, aiming light only where it is needed for safety and visibility. **VDOT street light outages can be called into NOVEC at 703-335-0500.**

■ Neighborhood Watch

We need everyone's help to avoid becoming an easy target! There have been recent attempted package thefts from front porches & vandalism in and around our community? Please help by reporting any suspicious activity to Prince William County Police Department, so they can document incidents and be on the alert. A good rule to follow is when in doubt, call the police immediately. Dial 911 for an emergency, or 703-792-6500 for a non-emergency.

■ Clearing Utility Easements

PWC Service Authority (PWCSA) will soon begin clearing their utility easements along the Lake Montclair shore line in Southlake Landing and Southlake Cove. PWCSA will also be monitoring their water & sewer lines for any blockages requiring maintenance. This work is being performed to allow PWCSA to easily access sewer and water lines in the case of an emergency. This is also necessary to prevent sewage backup into the lake.

■ Parking Issues

Parking remains one of the top complaints among community residents. Parking is always a premium in townhome communities. Please be considerate and use your allocated parking spaces only. **Please leave visitor spaces located near your homes solely for visitors. Twenty-four hours after the first warning sticker, vehicles will be subject to an automatic tow.**

SOUTHLAKE *Recreation Center* Fun and Fitness for Everyone

JAZZERCISE

Saturdays @ 8:30 a.m.

Contact: Mary Taylor at mbtaylor99@hotmail.com or 703-368-4413

YOGA

Mondays @ 6:15 p.m.

Contact: Polina at 703-541-8477

ENGINEERING FOR KIDS

Tuesdays @ 6:00 – 7:30 p.m.

January 15, 22, 29 and

February 5, 12, 19, 2013

Contact: Myrtha at Stafford@engineeringforkids.net or 540-288-1335

VANDORA's Dance, Drama and Voice Company

Wednesday evenings (by appt. only)

Contact: Vandy Dixon @ 703-670-8351

DRAMA KIDS International

Thursdays - 9/27/2012 - 5/9/2013

Grades K - 2 @ 5:00 pm - 6:00 pm

Grades 3 - 5 @ 6:00 pm - 7:00 pm

Grades 6 - 12 @ 7:00 pm - 8:00 pm

Contact: www.dramakids.com/va3 online registration or call 540-658-1190

NOTE: Southlake Recreation Clubhouse is available for rent. For clubhouse contracts and information visit www.southlakerecreation.com or call the management office at 703-670-2376.

Answers to Holiday Trivia - Page 1

- 1) Norse Mythology - Scandinavia
- 2) Germany - 16th Century
- 3) Jacob Marley